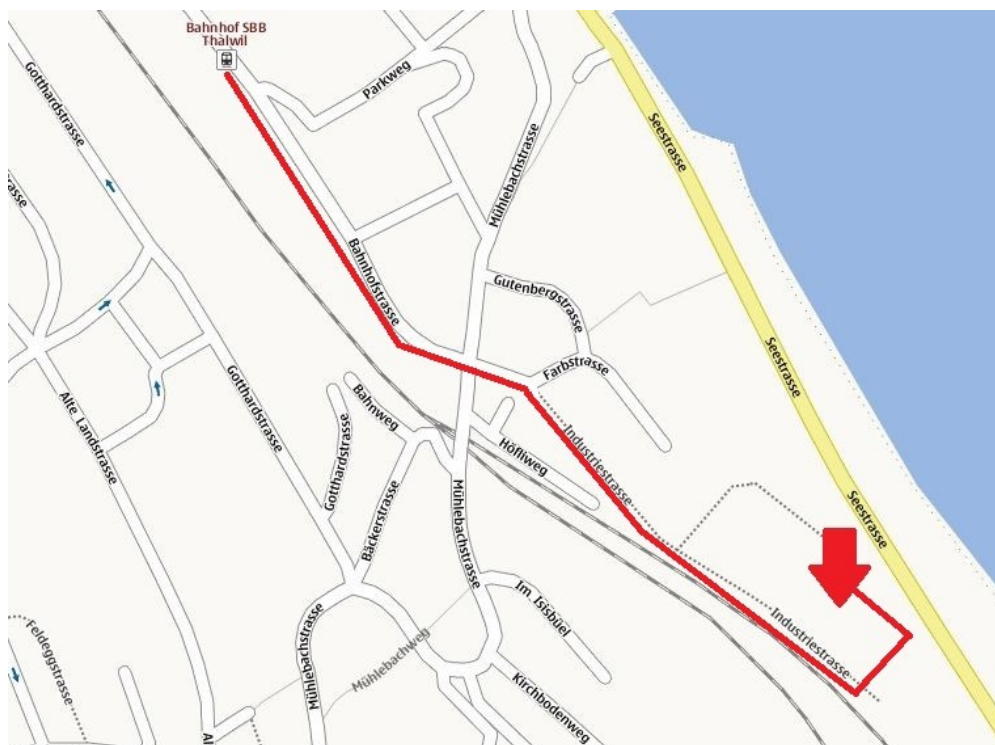




Directions to the globegarden in Thalwil, Farbstrasse 31

Starting point: train station in Thalwil

1. Follow the Bahnhofstrasse to the south until you cross the Mühlebachstrasse.



2. The road changes its name to Farbstrasse after the crossing. You keep straight on.



3. Follow the Farbstrasse for about 100 meters before you turn into the Industriestrasse (new name: Seidenstrasse).



4. Follow the Industriestrasse (new name: Seidenstrasse) for about 400 meters. To your right you should be able to see the rail tracks which run parallel to the Industriestrasse.



5. To your left you will find a longish white building. Turn left at the end of the building. Now you should be able to see the globegarden logo on the windows. Welcome!

